



altamaha.org 

SUMMER 2025 • VOLUME 53 • NUMBER 3



Celebrating 70 Years of Service with Altamaha Federal Credit Union

For 70 years, Altamaha Federal Credit Union has proudly served Wayne and Long counties, strengthening our community one member at a time.

From humble beginnings at the Rayonier mill to building branches that welcome everyone who lives, works, worships, or attends school in our area, our story is rooted in people helping people. Our commitment is simple—we help you keep more of what you earn and make the most of what you have, providing a wide range of financial products and services tailored to your needs.

At AFCU, we believe true success is measured not just in numbers, but in knowledge and support. That's why financial literacy is at the heart of our mission, whether it's through our Rocky Raccoon program for kids or easy-to-use tools for members of all ages.

We're more than a credit union—we're your neighbors, dedicated to giving back through events, donations, and volunteer work. Thank you for making us your trusted partner through every step of your financial journey. Here's to 70 years of service, and many more ahead!



Jesup Branch (L-R) Gail Pye, Lori Moore, Lanita Horne, Levada Dancer, Jodi Lewis



Board (L-R) Jodi Lewis, CEO; Candee Harris, Board; Ronnie Jones, Board; Lanita Horne, VP of Operations; Mark Reddish, Board



(L-R) Levada Dancer; Willie F. Davis, Member for 70 Years; Gail Pye

Vacation Peace of Mind: Tips for a Hassle-Free Getaway

Vacations are meant for relaxing, not stressing. For a smooth getaway, plan ahead, travel light, and notify the credit union of your travel plans to avoid any card issues. **Packing only essentials and reserving early** can save money and add perks like free breakfasts.

AFCU offers vacation loans instead of using a high-interest rate credit card. Most importantly, take time to unwind, try new things, and make lasting memories.

Remember to alert the credit union before you travel, especially if leaving the country, to avoid any restrictions due to what may appear to be suspicious spending activity.



Celebrating Our Scholarship and Work Base Learning Graduates

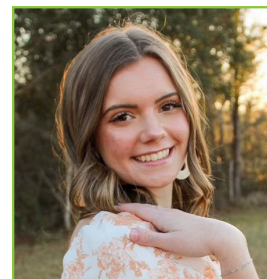
We are thrilled to celebrate four of our outstanding members of our community. Congratulations to Vana Lamb, our Wayne County High School scholarship graduate, Aimee Elise Massey, our Long County High School scholarship graduate, and to Chloe Lockart and Shelby Rhoden our Work Base learning students. Your dedication and hard work have truly set you apart.

Everyone at the credit union is proud of what you've accomplished. We are excited to see all you achieve in the future and look forward to supporting you every step of the way.

Well done, Vana, Aimee, Chloe, and Shelby! Your bright futures are just beginning.



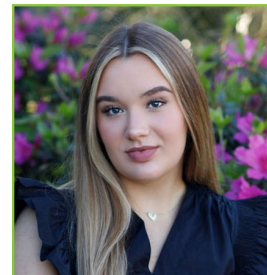
Vana Lamb



Chloe Lockhart



Aimee Elise Massey



Shelby Rhoden

Sparkling Learning and Connection Through Community Giving

Altamaha Federal Credit Union was proud to support the Wayne and Long County Libraries as they prepared for the Color Our World Summer Reading Program in 2025. Our team donated book bags to help local children and families get ready for a season filled with reading and creativity.

By partnering with the library, especially as they geared up for preregistration in May and an exciting kickoff event with the Center for Wildlife Education on June 7th, we aimed to nurture a love of learning right here in our community. AFCU believes that small gestures like these can spark big changes, inspiring curiosity and connection throughout Wayne and Long Counties.



Long County Library (L-R): Jeremiah Lightsey, Tammy Goober, Jessica Brumitt, Katie Beth Pritchett



Wayne County Library (L-R): Jeremiah Lightsey, Tay Mallard, Sandy Cravey, Chelton Burke, Michelle King

Holiday Closings

Independence Day: Friday July 4th

Labor Day: Monday, September 1st

REMINDER:

AFCU staff will NEVER call, email or text you and ask for your account number or other sensitive information.



Jesup
407 South First Street
(912) 427-8924

Ludowici
442 East Cypress Street
(912) 545-3257

Screven
217 J.L. Tyre Street
(912) 579-2767

Federally insured by NCUA



To access your account online visit altamaha.org or from your mobile device, download our app from the app store.